



Consistent quality management and the fascination of the Tabbert premium brand have highest priority in the development and manufacturing of our caravans – for different lifestyles, customer wishes, and demands.

Our great vertical range of manufacture and constant quality assurance throughout the whole manufacturing process guarantee the well-known Tabbert premium quality. With practice-oriented solutions and highest demands with respect to materials, colours, and shapes for exterior and interior design, our developers, designers, and product managers again and again surprise with attractive, mobile home environments.

This year we again provide many moving moments.
We are pleased to present many novelties for model year 2010/11.

Novelties for model year 2010/11

The model ranges Puccini, Vivaldi, and Da Vinci are equipped with a **new entrance door including window, removable waste bin and storage tray**. The proven safety locking system remains unchanged.

In the new model year the well-known „Comfort Package“ is renamed to „**Comfort Plus Package**“. The previous equipment features are supplemented with **adjustable head sections**. Everyone who prefers a higher head position for sleeping, or who likes to read in bed, will appreciate this new feature. Furthermore, the head section of the **cold foam mattress** is designed such that the head sections can be individually adjusted – even in double beds. This means even more comfort and individuality for a restful sleep.

Reprint free of charge, please forward a copy

Knaus Tabbert GmbH
Helmut-Knaus-Straße 1
94118 Jandelsbrunn

TABBERT brand management
Claudia Rothkopf
Tel.: +49 (0) 85 83 / 21 - 81 60



Hydraulic steadies.

Level the vehicle at the touch of a button. The hydraulic system will level the caravan fully automatically in just two minutes. Six hydraulic steadies are connected to the chassis and the axle by a mounting plate. This system, which is a new option for caravans, creates unbeatable stability and is now available for the full range of Tabbert vehicles.

Homepage:

In keeping with the improved communication of the Tabbert brand, the completely revised homepage for Tabbert is now available online at www.tabbert.de

Reprint free of charge, please forward a copy

Knaus Tabbert GmbH
Helmut-Knaus-Straße 1
94118 Jandelsbrunn

TABBERT brand management
Claudia Rothkopf
Tel.: +49 (0) 85 83 / 21 - 81 60



Upholstery versions:

3 new and exclusive living environments are available each for the Puccini, Vivaldi, and Da Vinci model ranges.

In all the model ranges we attached greatest value to workmanship and seating comfort.

As an option you may select your upholstery version comprehensively for all model ranges.

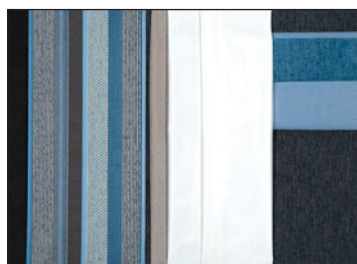
The following upholstery versions are available

Puccini

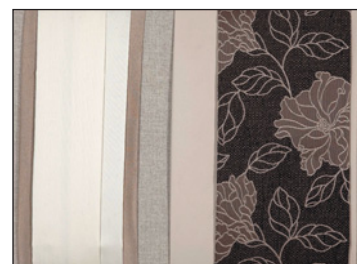
Scala



Aida

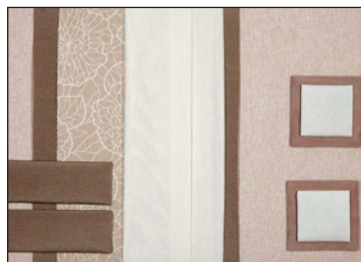


Contina

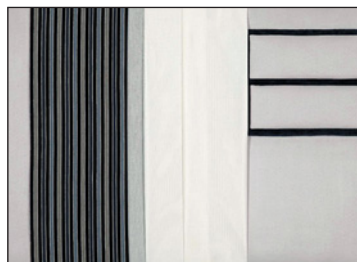


Vivaldi

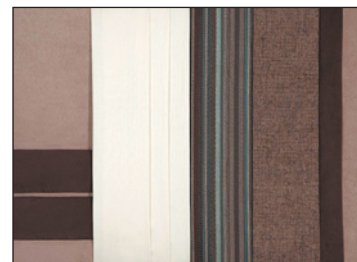
Crema



Veneziana



Aqua

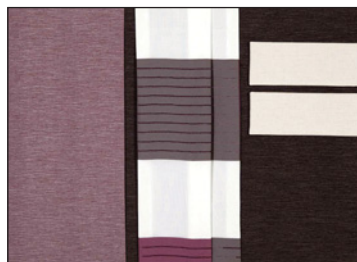


Da Vinci

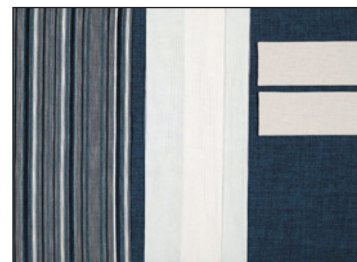
Palazzo



Castello



Azzurro





DaVinci

The **interior** was completely redesigned: The living environment of the DaVinci model range now surprises with **new**, rounded **doors** in **pear tree**, featuring large, modern handles. In the kitchen, **push-locks** guarantee reliable door closing.

With respect to colour the trendsetter for leisure-time and families shines in new splendour: The champagne-coloured trays are upgraded with a silver piping strip. The current „bi-colour“ trend also continues in the kitchen and creates a harmonious and optically attractive living environment.

Soft-close drawer mechanisms are used in the kitchen. These self-closing mechanisms guarantee a silent and almost automatic closing of kitchen drawers – a clear plus in caravan living comfort.

The **light concept** also is completely new: Under the tray, a **circumferential and dimmable LED light strip** provides a highly comfortable atmosphere.

The new ceiling panels with integrated spots give the kitchen completely new living accents. The **illuminated display cabinet** also is completely new: On the one hand this display cabinet emphasises the pleasant living ambience, on the other hand it provides additional stowage room. The new light concept furthermore includes modern ceiling lamps and corner spots.

Matching the interior, the **floor** is in a warm parquet design, and the worktops and tabletops in a bright slate decor.

You will immediately feel at home in the DaVinci: New, comfortable **upholstery** with lumbar support, and the new fabric groups Azzurro (blue), Palazzo (beige/brown) and Castello in plum trend colour not only are a pleasure for the back, but also for the eye.

The **children's room** is a special highlight: The upper bed can be folded down (540 DM and 585 DM). This new feature creates even more flexibility, and in just a few simple steps there is a sofa offering additional seating, or a cuddling corner. The bottom bed also can be folded away, creating additional space for a playing corner or for more stowage room. As an option a stowage room door is available here.

The following **layouts** are available:

450 TD
540 DM 2.3 and 2.5
585 DM
700 KD



Puccini

„For the most beautiful moments in life“ – that is the motto of the Puccini model range in the new model year. Exterior and interior have been completely new developed, inspired by the modern and innovative design language of the Paganini model range. The Puccini model range presents itself in a completely new look: Precious and elegant, future-oriented and perfectly shaped.

Puccini – Exterior

The intention of our developers, designers, and product managers was to improve the Tabbert roof that was developed more than 40 years ago by Alfred Tabbert. After intensive development work and many tests we managed to find materials that allowed us to optimise the roof design.

With approximately **5.8 centimetres the new Tabbert roof is almost twice as strong as a conventional sandwich roof**. Doubled strength and new materials ensure clearly improved sound and heat insulation and optimised diffusion properties. Even under intense sunlight the roof guarantees perfect ventilation and excellent room climate - a formation of condensation water is almost completely excluded.

A **roof of glass fibre reinforced plastic** is available as an option. The high-quality fibre plastic composite material provides improved protection against hail damage.

The **fenders** that run to the roof from the front and rear side give the caravan an automotive design and emphasise the striking and unmistakable character of the completely new designed Puccini model range.

The **front mask** is of a more striking design than before. The design of the gas bottle locker cover also was inspired by the Paganini masterpiece. The gas bottle locker can be easily accessed by way of the proven parallelogram mechanism.

Standard equipment in the exterior includes plain sheet metal finish and high-quality flush **Seitz-S6 windows** with new, somewhat darker tint.

The rear of the caravan presents itself in an especially expressive and characteristically concise design: State-of-the-art **LED lamps**, also in the area of the direction indicators, upgraded with precious chromium rings, offer an extremely long service life.

All three lamps are white and thus guarantee a harmonious and uniform appearance. The lamps are integrated in an elegant rear lamp assembly which with a red panel picks up the design of the Paganini again.



Puccini - Interior

For the furniture doors Tabbert continues to use first-class **real wood veneer**. This veneer that also is used in the manufacture of high-quality furniture is of outstanding quality, climate-friendly, and easy to repair. All the top cabinet doors additionally are upgraded by two chromium veins and equipped with large, elegant chromium handles with comfortable snap-in locks.

Under the tray, a circumferential indirect LED strip has been integrated that can be dimmed and thus guarantees a warm atmosphere.

The interior colour concept also includes the kitchen: The combination of champagne-coloured top cabinets and cherry wood creates colour accents in the kitchen. This is combined with a laminate material in granite decor.

Maximum work area and a large three-burner-cooker are convincing features in the kitchen. (A gourmet kitchen package with Spinflo cooker, kitchen back panel, sink, tabletop mixer tap, and sink cover is available as an option).

The **two-coloured ceiling panels** also convey a sense of quality. They pick up the interior design language and provide additional accents with their integrated LED spots.

Extra-high backrests and highly comfortable seating turn the seating group into a genuine wellness area comparable to a cosy couch.

With a **lying area of more than two metres** the **bed** in the sleeping area of the Puccini also has become even more comfortable. The panel at the bed's head part provides another plus in comfort.

The new **floor in ship parquet design** is matched to the interior concept. Matching laminate materials in granite design are used in kitchen and bathroom.

The washstand offers large mirrors, a modern mixer tap and a washbasin in chromium design. In the bathroom, additional stowage room and the **ceramic-coated Dometic toilet** guarantee the necessary comfort (a comfort shower is available as an option).

The **media cabinet** also is a completely new development (560 TD). It accommodates a **22 inch screen** that can be swivelled to the seating group or to the bed, just as required. The two **illuminated glass display cabinets** provide a home-like ambience and additional stowage room.

The series-8 **refrigerator** features a removable freezer compartment. This practice-oriented novelty both is included in the smaller and in the larger 189 litre refrigerator.



The following layouts are available in model year 2010/11:

495 HE

560 TD

550 E 2.5 and 2.3

655 D

685 DF

(A 189 litre refrigerator is possible as an option for layouts 550 E, 655 D and 685 DF!).

Reprint free of charge, please forward a copy

Knaus Tabbert GmbH
Helmut-Knaus-Straße 1
94118 Jandelsbrunn

TABBERT brand management
Claudia Rothkopf
Tel.: +49 (0) 85 83 / 21 - 81 60